

The Maryland

1 and 2 bedroom
apartments

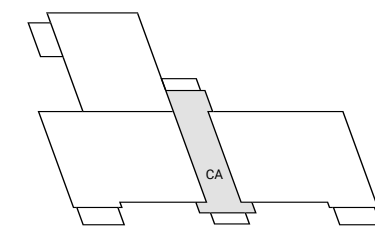
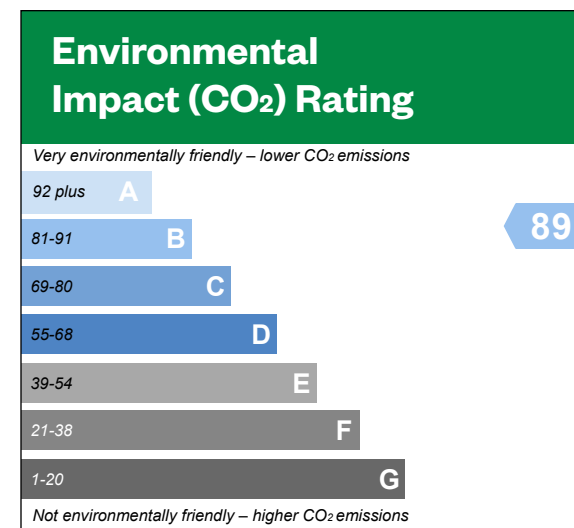
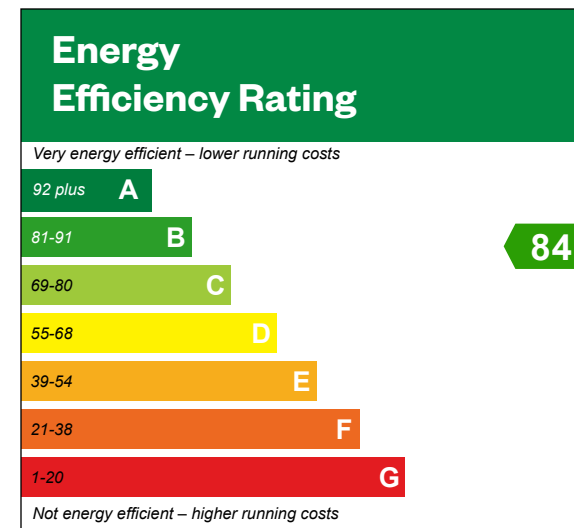


The Maryland

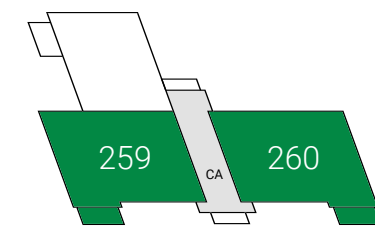
2 bedroom apartment

Plots 256 & 259 – as shown

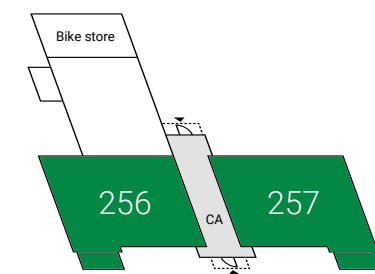
Plots 257 & 260 – handed



Second floor

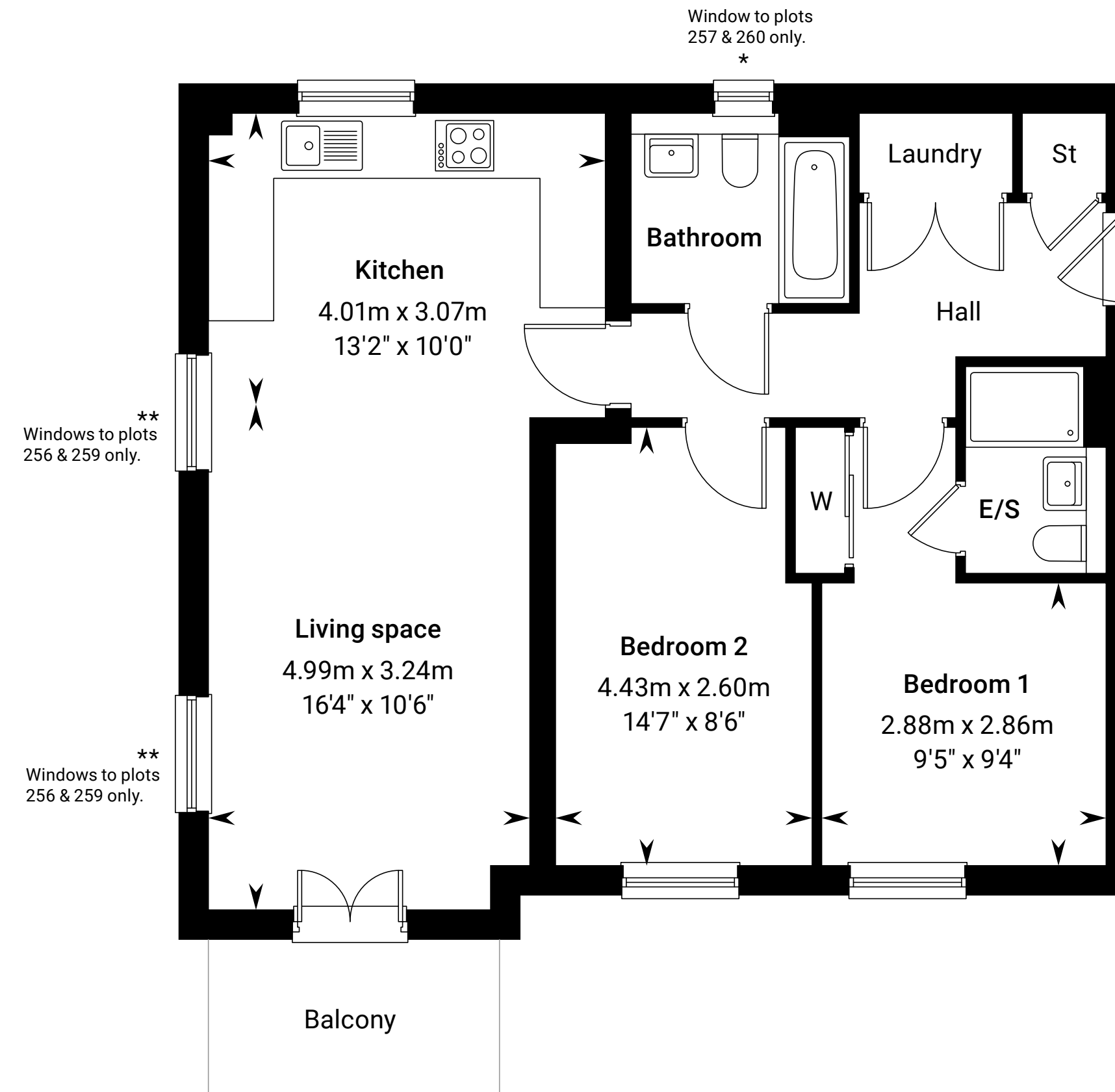


First floor



Ground floor

CA Communal area



*Window to plots 257 & 260 only. **Windows to plots 256 & 259 only. Please ask your Sales Consultant for further details. E/S: En-Suite. St: Store cupboard. W: Wardrobe.

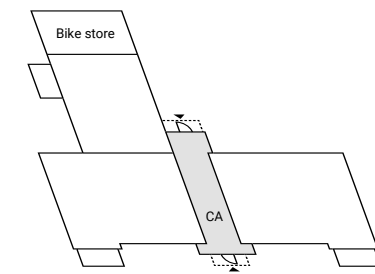
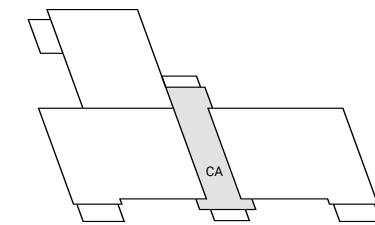
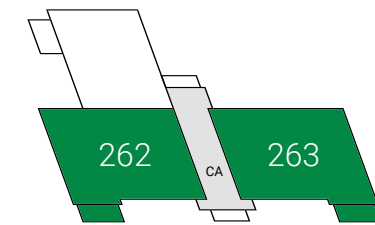
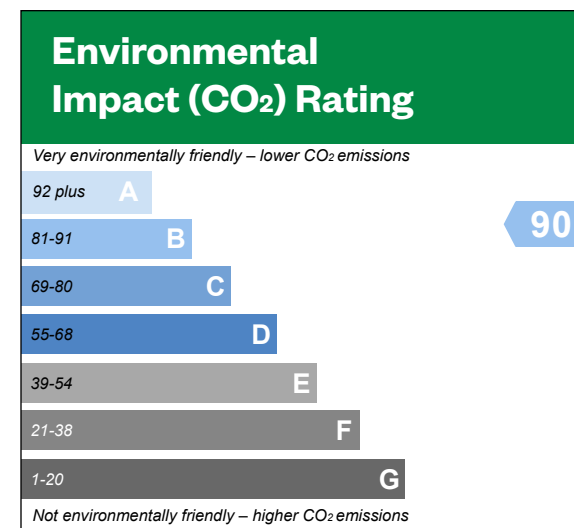
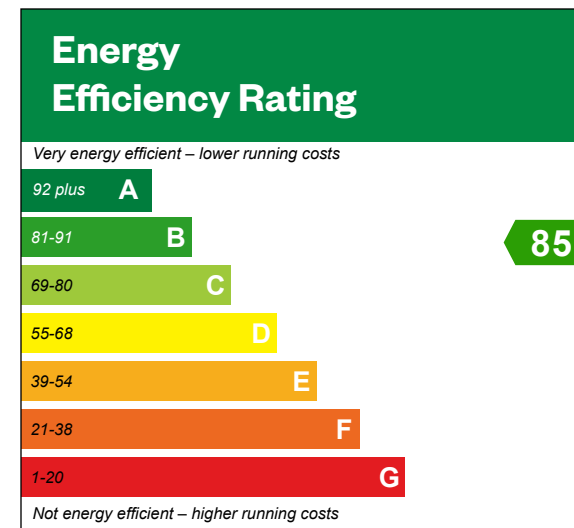
The Consumer Protection from Unfair Trading Regulations 2008. Legal & General Homes operates a policy of continual product development and the specifications outlined in this brochure are indicative only. Information contained is accurate at date of publication on 18.06.2024. See the main brochure for the full Consumer Protection statement. Predicted Energy Assessment for properties that are incomplete. Once the property is completed, this rating will be updated and an official Energy Performance Certificate will be created for the property.

The Maryland

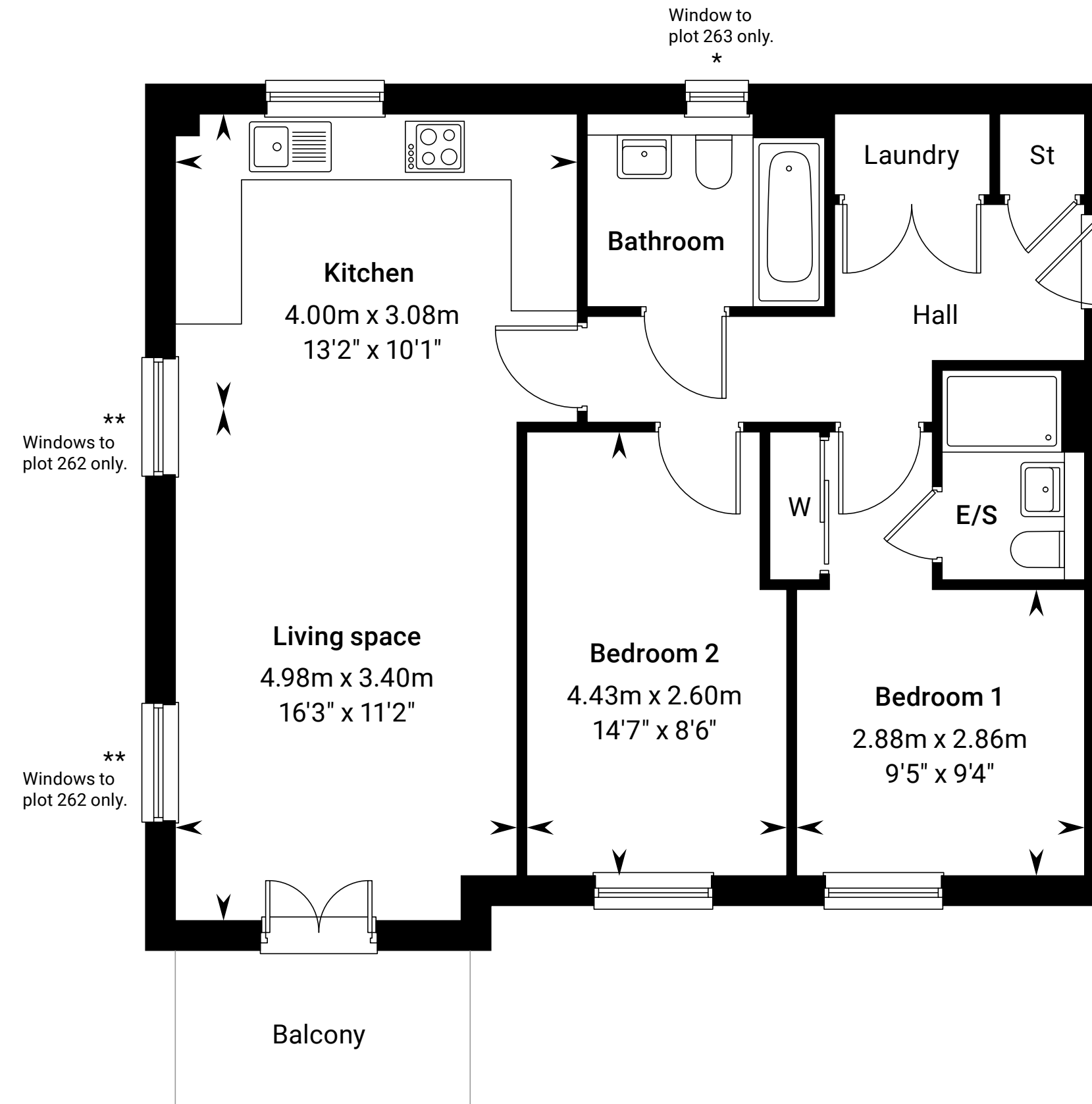
2 bedroom apartment

Plot 262 – as shown

Plot 263 – handed



CA Communal area



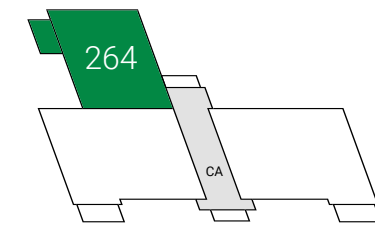
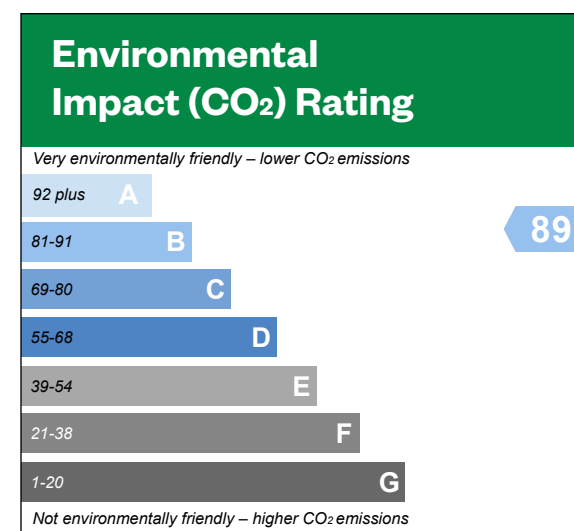
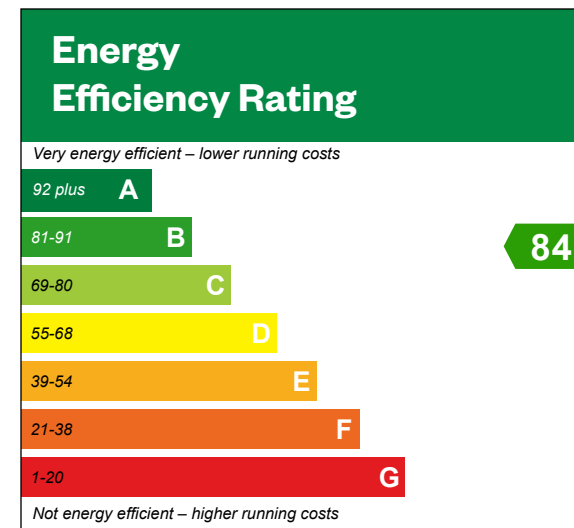
*Window to plot 263 only. **Windows to plot 262 only. Please ask your Sales Consultant for further details. E/S: En-Suite. St: Store cupboard. W: Wardrobe.

The Consumer Protection from Unfair Trading Regulations 2008. Legal & General Homes operates a policy of continual product development and the specifications outlined in this brochure are indicative only. Information contained is accurate at date of publication on 18.06.2024. See the main brochure for the full Consumer Protection statement. Predicted Energy Assessment for properties that are incomplete. Once the property is completed, this rating will be updated and an official Energy Performance Certificate will be created for the property.

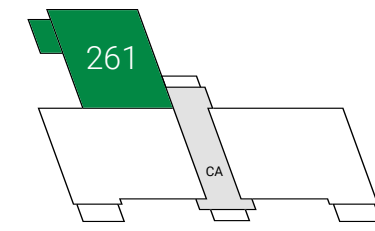
The Maryland

1 bedroom apartment

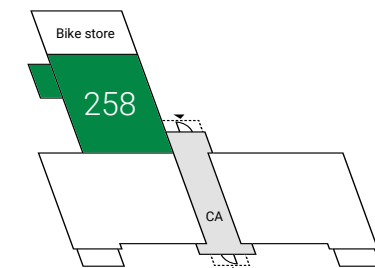
Plots 258, 261 & 264 – as shown



Second floor

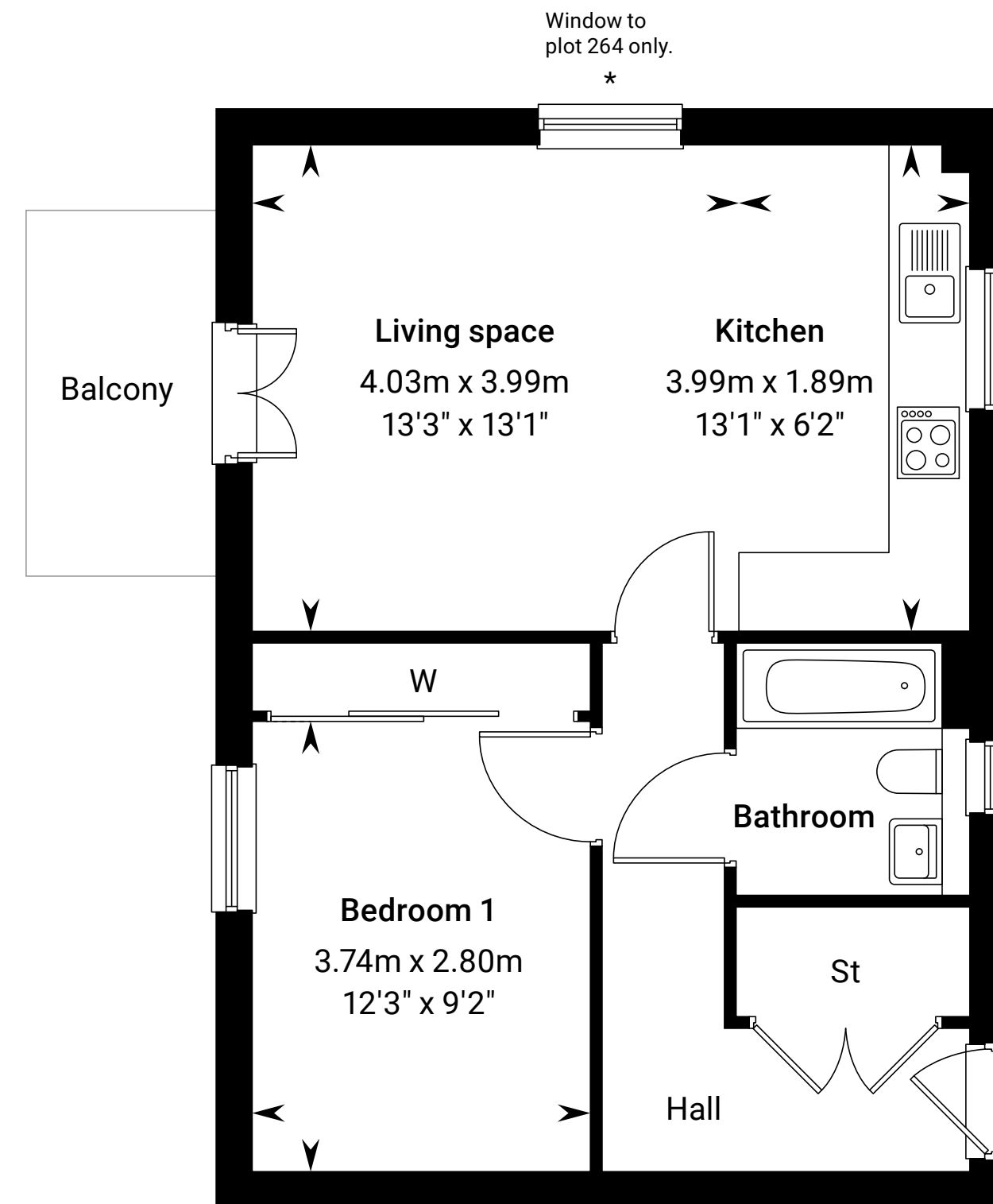


First floor



Ground floor

CA Communal area



*Window to plot 264 only. Please ask your Sales Consultant for further details. St: Store cupboard. W: Wardrobe.

The Consumer Protection from Unfair Trading Regulations 2008. Legal & General Homes operates a policy of continual product development and the specifications outlined in this brochure are indicative only. Information contained is accurate at date of publication on 18.06.2024. See the main brochure for the full Consumer Protection statement. Predicted Energy Assessment for properties that are incomplete. Once the property is completed, this rating will be updated and an official Energy Performance Certificate will be created for the property.